

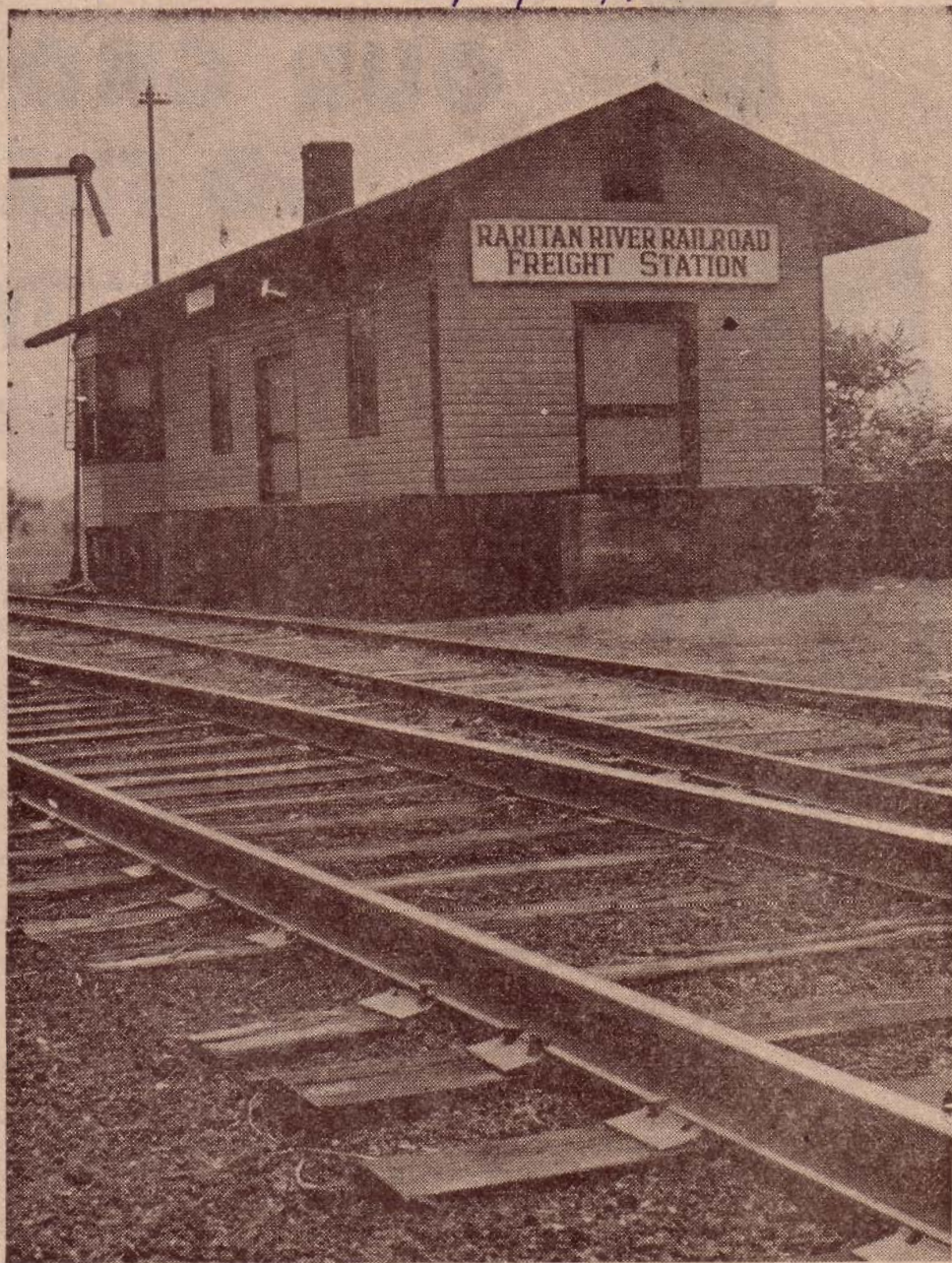
HOMIE NEWS 8/19/1973



GATE TENDER—Along with passenger trains, the number of gate tenders employed by railroads has also diminished. Joseph Mezzaros,

above, continues to hold his job of more than 20 years—raising and lowering the station gates in the Parlin section of Sayreville.

HOMIE NEWS 8/19/1973



MILLTOWN — It has been 34 years since the Raritan River Railroad converted this station from passenger to freight. Trains pass by enroute to South Amboy.