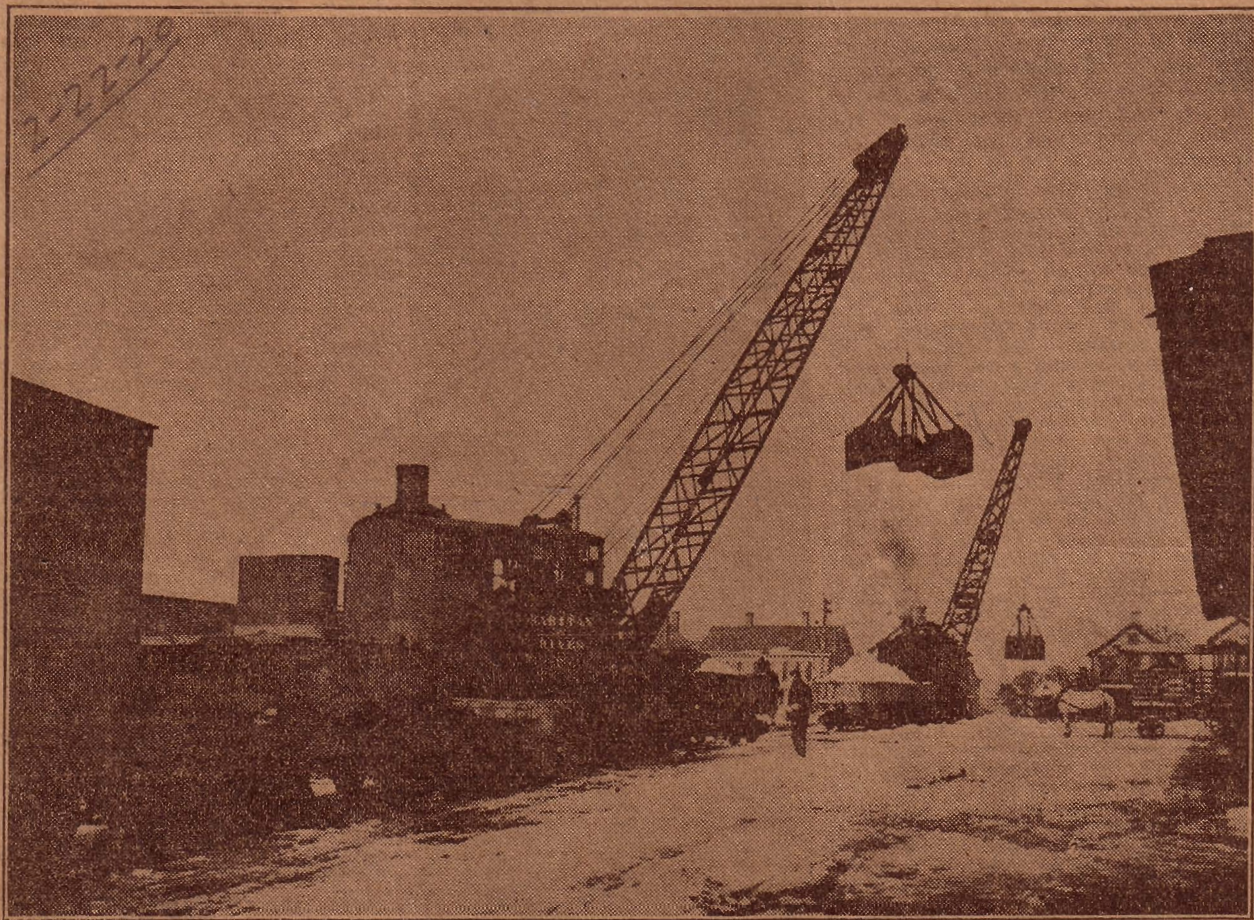


*We'll Say That the Raritan River Railroad  
Disposes of Snow With Neatness and Dispatch*



True to form, the Raritan River Railroad got through the blizzard with a record of almost perfect train service. The accompanying picture, taken near the Raritan River R. R.

depot in this city, shows the big, powerful cranes used to clear snow by this railroad, which runs between New Brunswick and South Amboy and is an important outlet and inlet

for local manufacturers' production and also passenger traffic. The accompanying picture was taken by Olaf Viken, Morrison building, Paterson street, city.